

early
lab

3/4

Research Findings Document

Post-Field Trip
19 June 2015

Lab no.
Subject

1
Youth Mental Health

Partner

**The Child, Family and
Young People Service
at Norfolk & Suffolk
NHS Foundation Trust
(NSFT)**

ual:

early
lab

Research Findings Document

Contents

Part 1	What we want
Part 2	How to get it
Part 3	What needs to happen first
Part 4A	Research methods
Part 4B	Research methods

What needs to happen first

We need a “cultural innovation” – Dr Margaret Hannah, Deputy Director of Health, NHS Fife

“Not simply trying to improve the existing system but to bring about a fundamental shift in the values and assumptions that underpin healthcare practice.”

We must “pay attention to factors that might otherwise go un-noticed:

people

as well as data, the human system of

relationships

as well as the abstract system of flows and connections,

qualities

as well as quantities, who we are

being

as much as what we are doing.”

This means “shifting the system towards our

aspirations

rather than just fixing what is failing.”

We need a “cultural innovation” – Dr Margaret Hannah, Deputy Director of Health, NHS Fife

3/4

What this is needed to transformative innovation

“We’re trying to improve the existing system to bring about a fundamental shift in the value and assumptions that underpin healthcare practice.”

We must “pay attention to what’s at risk otherwise it goes un-noticed:

relationships as well as the abstract system of flows and connections,

qualities

as well as quantities, who we are

being

as much as the way we do it.”

This means “shifting the system towards our

aspirations

rather than just fixing what is failing.”

We need a “cultural innovation” – Dr Margaret Hannah, Deputy Director of Health, NHS Fife

“Its hallmark is engaging all of our human capacities, including

creativity and imagination

transformational innovation

“Not simply trying to improve the existing system but to bring about a fundamental shift in the values and assumptions that underpin healthcare practice.”

We must “pay attention to factors that might otherwise go un-noticed:

relationships as well as data, the human system of

relationships as well as the abstract system of flows and connections,

being as much as what we are doing.”

This means “shifting the system towards our aspirations rather than just fixing what is rather than rely on best practice, big data and small tests of incremental improvement.”

**There needs to be a
“pooling of budgets”
across:**

Quoting the UK
Government’s Youth
Mental Health
Taskforce’s Coordinated
System report

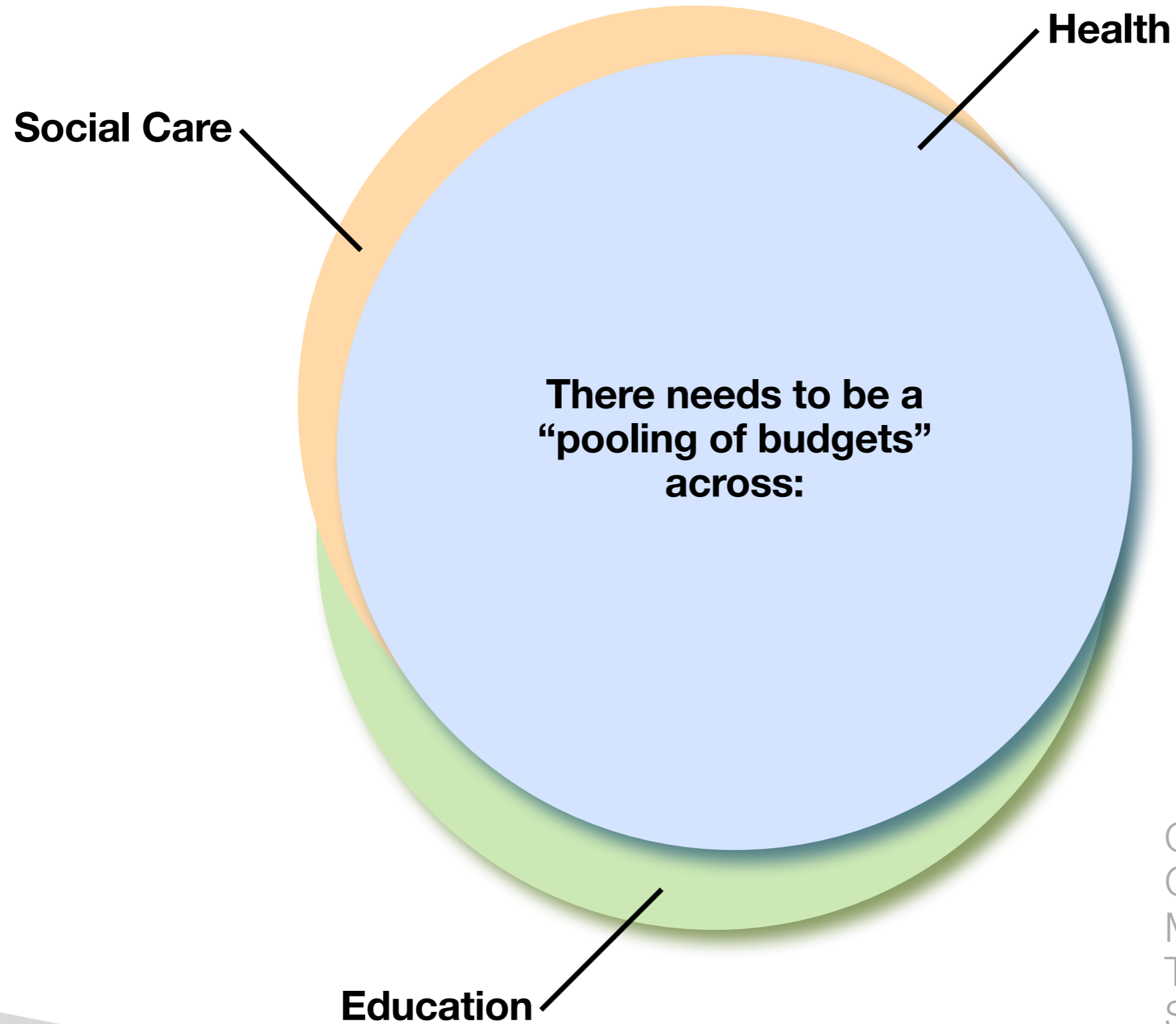
Health

**There needs to be a
“pooling of budgets”
across:**

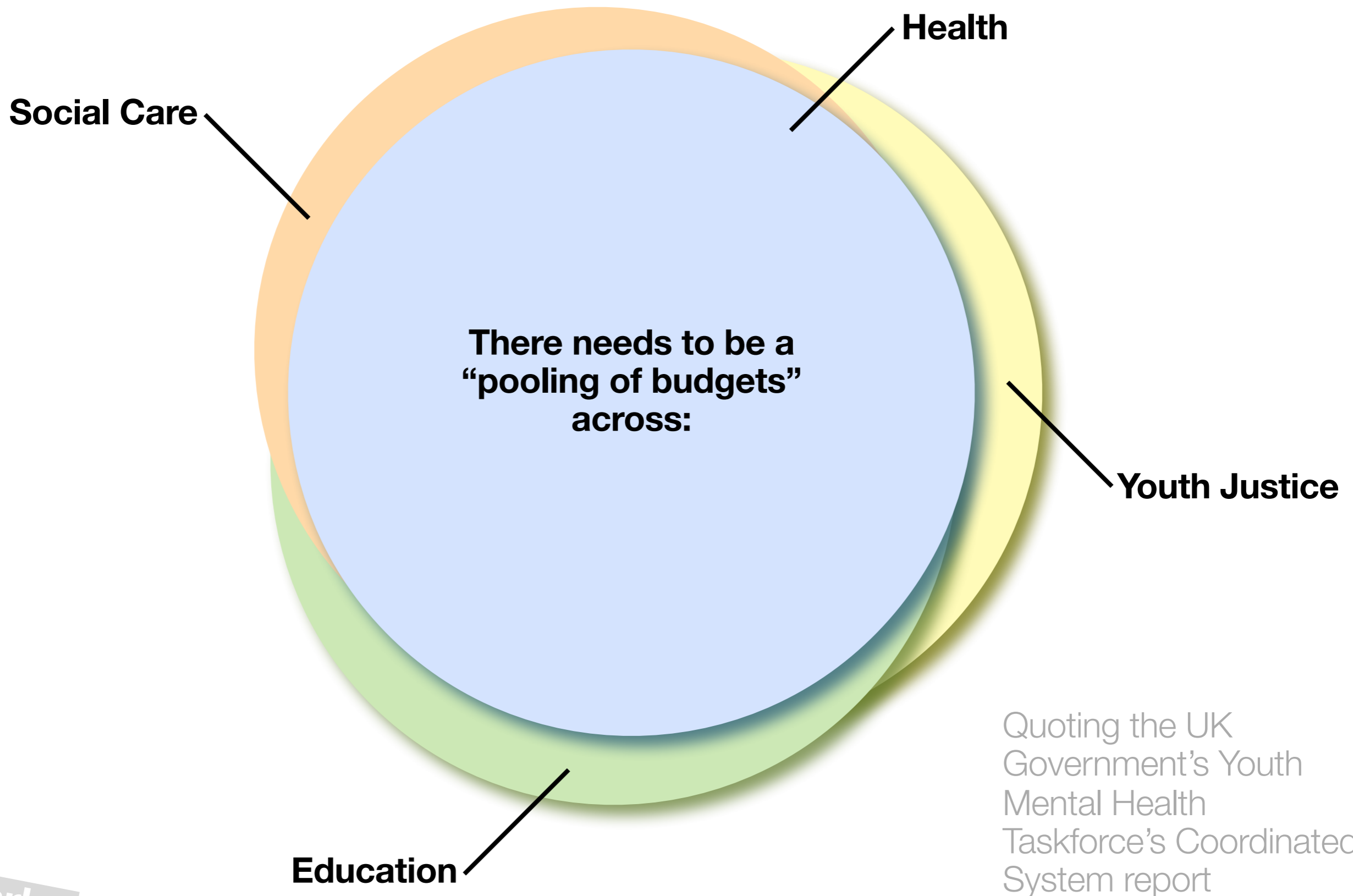
Quoting the UK
Government’s Youth
Mental Health
Taskforce’s Coordinated
System report



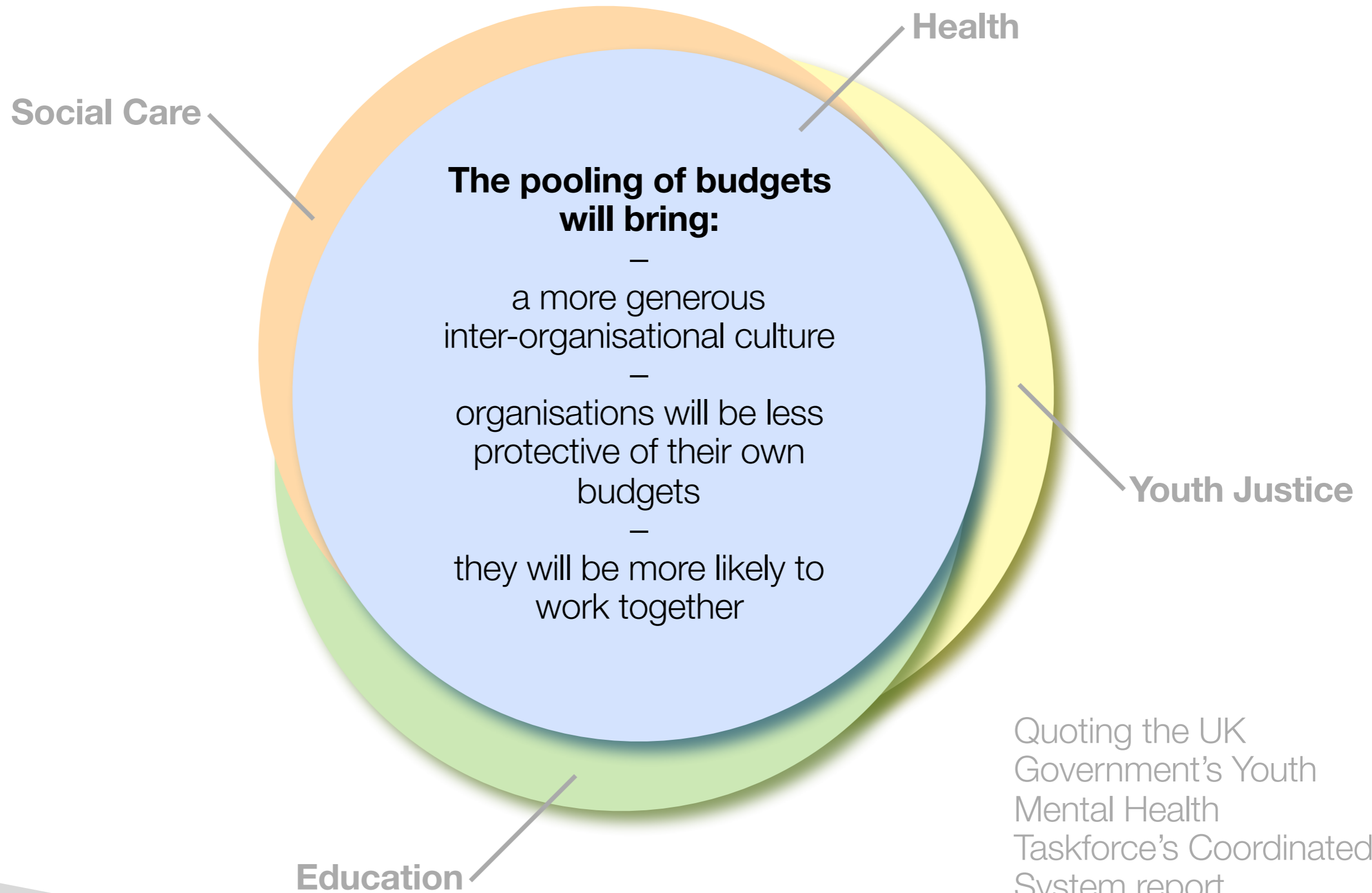
Quoting the UK
Government’s Youth
Mental Health
Taskforce’s Coordinated
System report



Quoting the UK
Government’s Youth
Mental Health
Taskforce’s Coordinated
System report

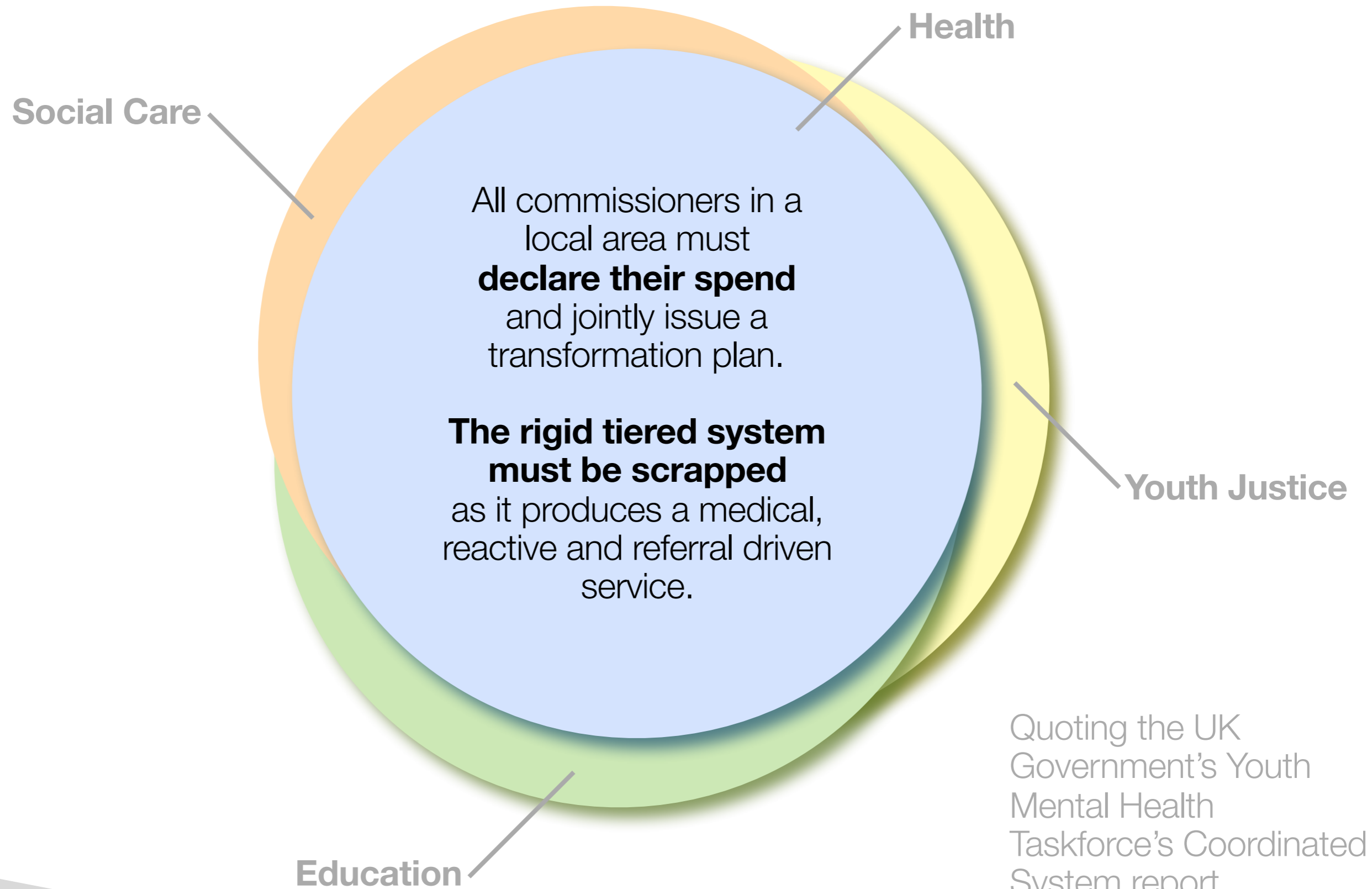


Quoting the UK
Government’s Youth
Mental Health
Taskforce’s Coordinated
System report



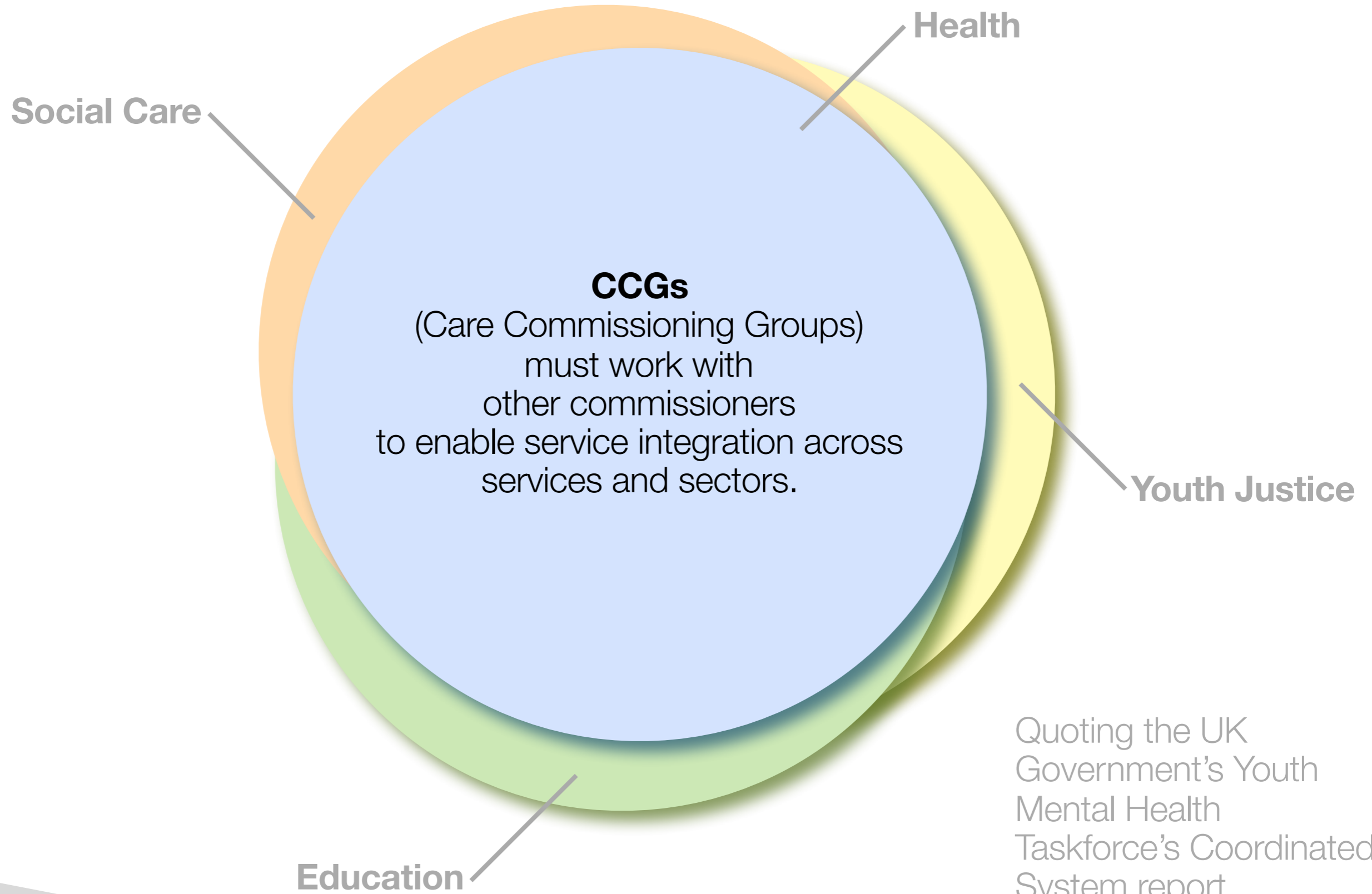
Quoting the UK Government's Youth Mental Health Taskforce's Coordinated System report

3/4 What needs to happen first: transformation plan

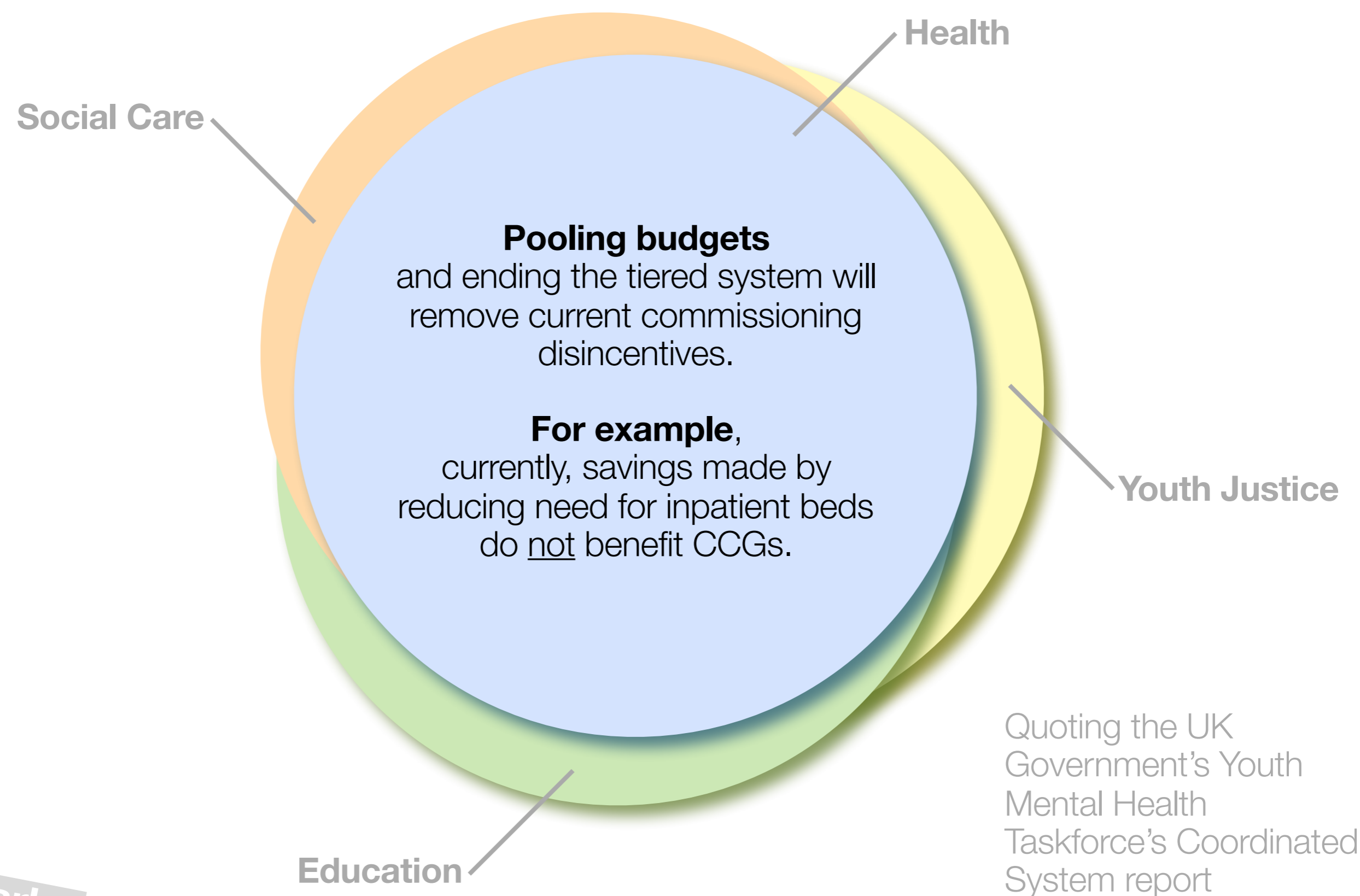


Quoting the UK Government's Youth Mental Health Taskforce's Coordinated System report

3/4 What needs to happen first: transformation plan



3/4 What needs to happen first: transformation plan



Quoting the UK
Government's Youth
Mental Health
Taskforce's Coordinated
System report



early
lab

The Early Lab, offering opportunities for designers to experience being involved in processes early (long before they are usually invited) so that their contributions might have a greater chance to deliver resilient and sustainable outcomes.

Trans-disciplinary, collaborative, complex socio-ecological challenges met responsively with people where they are, in their places.

© Early Lab / London / July 2015

earlylab.org

Email us from the menu on the website, or...

Nick Bell

<http://nickbelldesign.co.uk/>

nick@nickbelldesign.co.uk

Fabiane Lee-Perrella

<http://www.ourflour.com>

f.perrella@camberwell.arts.ac.uk